

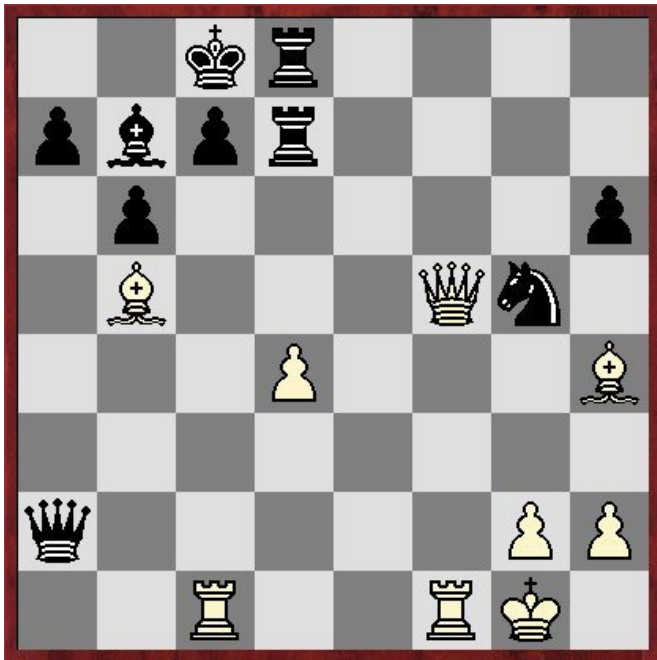
(595701) Pert,N (2503) - Devereaux,M (2377) [E13]

ch-EU Liverpool ENG (9), 14.09.2006

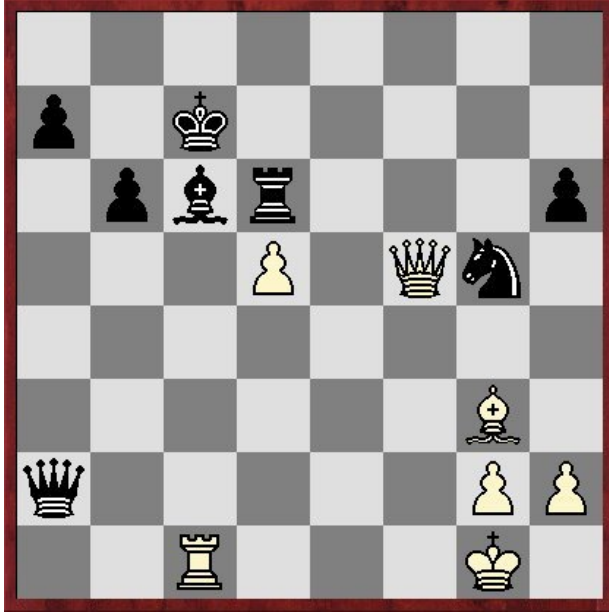
[Pert, N]

1.d4 Nf6 2.Nf3 e6 3.c4 b6 4.Nc3 Bb7 5.Bg5 Bb4 6.Nd2 h6 7.Bh4 Bxc3 8.bxc3 d6 9.f3 Nbd7 10.e4 e5
11.Bd3 Qe7 12.Nf1 g5 13.Bf2 exd4 14.cxd4 d5 15.cxd5 Nxd5 16.Ng3 Qb4+ 17.Qd2 Nf4 18.Bf1 Qa4
19.Ne2 0-0-0 20.Nxf4 gxf4 21.Be2 f5 22.0-0 fxe4 23.fxe4 Nf6 24.Qxf4 Nxe4 25.Rac1 Rh7 26.Qf5+
Rhd7 27.Bb5 Qxa2 28.Bh4 Ng5

Can you spot the winning continuation for white?



29.Bxd7+! Rxd7 30.Rxc7+!! Kxc7 31.Bg3+! Rd6 [31...Kd8 32.Qf8#; 31...Kc6 32.Rc1+ Qc4 33.Rxc4#] 32.Rc1+ Bc6 [32...Kd8 33.Qf8+ (33.Bxd6?? Qxg2#) 33...Kd7 34.Rc7+!! Ke6 (34...Kxc7 35.Qxd6+ Kc8 36.Qc7#) 35.d5+! Kxd5 (35...Qxd5 36.Re7#) 36.Qxd6+ Ke4 37.Qe5+ Kd3 38.Rc3+ Kd2 39.Qe1#] 33.d5!



And Black will lose both his rook and bishop so he resigned. 1-0